

# DREI EQUALI

für vier Posaunen komponiert von L. VAN BEETHOVEN

Sources: from MuseScore & IMSLP; layout & clefs (TTBB) arr. John Kilpatrick

## Equale No.1

Andante

Tbn1

Tbn2

Tbn3

Tbn4

*p*  $\text{<}$  *p*

*p*  $\text{<}$  *p*

*p*  $\text{<}$  *p*

*p*  $\text{<}$  *p*

13

*cresc.* *sf* *sf* *p* *cresc.* *sf* *sf*

*cresc.* *sf* *sf* *p* *cresc.* *sf* *sf*

*cresc.* *sf* *sf* *p* *cresc.* *sf* *sf*

*cresc.* *sf* *sf* *p* *cresc.* *sf* *sf*

26

*p*  $\text{<}$  *p* *f*

*p*  $\text{<}$  *p* *f*

*p*  $\text{<}$  *p*

*p*  $\text{<}$  *p* *f*

*f* *f* *f* *ff* *p* *cresc.* *p* *dim.* *pp*  
*f* *f* *f* *ff* *p* *cresc.* *p* *dim.* *pp*  
*f* *f* *f* *ff* *p* *cresc.* *p* *dim.* *pp*  
*f* *f* *f* *ff* *p* *cresc.* *p* *dim.* *pp*

### Equale No. 2.

#### Poco Adagio

*dolce*  
*dolce*  
*dolce*  
*dolce*

Musical score for four staves, measures 1-8. The key signature has one sharp (F#) and the time signature is 3/2. The notation includes various note values, rests, and phrasing slurs.

Equale No. 3.

*Poco sostenuto*

Musical score for four tuba parts (Tbn1-4), measures 9-16. The key signature has three flats (Bb, Eb, Ab) and the time signature is 3/2. The notation includes various note values, rests, and phrasing slurs.

Musical score for four staves, measures 17-24. The key signature has three flats (Bb, Eb, Ab) and the time signature is 3/2. The notation includes various note values, rests, and phrasing slurs.

# Trombone 1

# DREI EQUALI

für vier Posaunen componirt von L. VAN BEETHOVEN

Sources: from MuseScore & IMSLP; layout & clefs (TTBB) arr. John Kilpatrick

## Equale No.1

Andante



*p*  $\rightrightarrows$  *p*

13



$\rightrightarrows$   $\leftarrow\leftarrow$  *cresc. sf sf p cresc. sf sf*

26



*p p f*

38



*sf sf sf ff p cresc. p dim. pp*

## Equale No. 2.

Poco Adagio



*dolce*

13

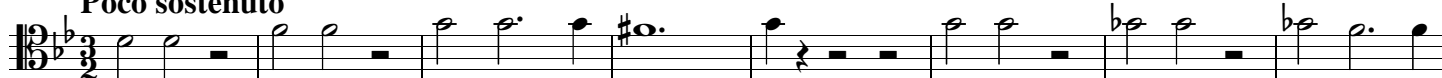


26



## Equale No. 3.

Poco sostenuto



9



# Trombone 2

# DREI EQUALI

für vier Posaunen komponiert von L. VAN BEETHOVEN

Sources: from MuseScore & IMSLP; layout & clefs (TTBB) arr. John Kilpatrick

## Equale No.1

Andante

First staff of music for Equale No. 1, measures 1-12. The key signature has one sharp (F#) and the time signature is common time (C). The music consists of half notes and rests. Dynamics include *p* and *mf*.

13

Second staff of music for Equale No. 1, measures 13-25. The music continues with half notes and rests. Dynamics include *cresc.*, *sf*, *p*, and *sf*.

26

Third staff of music for Equale No. 1, measures 26-37. The music continues with half notes and rests. Dynamics include *p* and *f*.

38

Fourth staff of music for Equale No. 1, measures 38-48. The music continues with half notes and rests. Dynamics include *sf*, *ff*, *p*, *cresc.*, *p*, *dim.*, and *pp*.

## Equale No. 2.

Poco Adagio

First staff of music for Equale No. 2, measures 1-12. The key signature has one sharp (F#) and the time signature is common time (C). The music consists of half notes and rests. Dynamics include *dolce*.

13

Second staff of music for Equale No. 2, measures 13-25. The music continues with half notes and rests.

26

Third staff of music for Equale No. 2, measures 26-48. The music continues with half notes and rests.

## Equale No. 3.

Poco sostenuto

First staff of music for Equale No. 3, measures 1-8. The key signature has one flat (Bb) and the time signature is 3/2. The music consists of half notes and rests.

9

Second staff of music for Equale No. 3, measures 9-16. The music continues with half notes and rests. Dynamics include *mf*.

# Trombone 3

# DREI EQUALI

für vier Posaunen componirt von L. VAN BEETHOVEN

Sources: from MuseScore & IMSLP; layout & clefs (TTBB) arr. John Kilpatrick

## Equale No.1

Andante

Musical staff for Equale No. 1, measures 1-12. The staff is in bass clef with a key signature of one flat (B-flat). The music begins with a piano (*p*) dynamic and a hairpin crescendo leading to another piano (*p*) dynamic.

13

Musical staff for Equale No. 1, measures 13-25. Measure 13 starts with a hairpin crescendo and a second dynamic marking (*p*). Measures 14-15 feature a double bar line with a '2' above it, indicating a second ending. The dynamics include *cresc.*, *sf*, *sf*, *p*, *cresc.*, *sf*, and *sf*.

26

Musical staff for Equale No. 1, measures 26-37. The staff begins with a piano (*p*) dynamic and a hairpin crescendo leading to another piano (*p*) dynamic. Measure 37 features a double bar line with a '2' above it, indicating a second ending.

38

Musical staff for Equale No. 1, measures 38-48. The dynamics range from *f*, *sf*, *sf*, *ff*, *p*, *cresc.*, *p*, *dim.*, and *pp*. The piece concludes with a fermata over the final note.

## Equale No. 2.

Poco Adagio

Musical staff for Equale No. 2, measures 1-12. The staff is in bass clef with a key signature of two sharps (D major). The music begins with a *dolce* marking.

13

Musical staff for Equale No. 2, measures 13-25. The music continues with various note values and rests.

26

Musical staff for Equale No. 2, measures 26-48. The piece concludes with a fermata over the final note.

## Equale No. 3.

Poco sostenuto

Musical staff for Equale No. 3, measures 1-8. The staff is in bass clef with a key signature of two flats (B-flat major) and a 3/4 time signature.

9

Musical staff for Equale No. 3, measures 9-16. The music continues with various note values and rests.

# Trombone 4

# DREI EQUALI

für vier Posaunen componirt von L. VAN BEETHOVEN

Sources: from MuseScore & IMSLP; layout & clefs (TTBB) arr. John Kilpatrick

## Equale No.1

Andante

Musical staff for Equale No. 1, measures 1-12. The staff is in bass clef with a key signature of one flat (B-flat). The music begins with a half rest, followed by a half note G2, a quarter note F2, and a half note E2. A dynamic marking of *p* is placed below the first note. A hairpin crescendo starts under the first note and ends under the second note, with another *p* marking below the second note. The staff continues with various rests and notes, ending with a half note G2.

13

Musical staff for Equale No. 1, measures 13-25. The staff continues with various notes and rests. A hairpin crescendo starts under measure 13 and ends under measure 15. Dynamic markings include *cresc.*, *sf*, *sf*, *p*, *cresc.*, *sf*, and *sf*.

26

Musical staff for Equale No. 1, measures 26-37. The staff continues with various notes and rests. A hairpin crescendo starts under measure 26 and ends under measure 28. Dynamic markings include *p* and *f*.

38

Musical staff for Equale No. 1, measures 38-48. The staff continues with various notes and rests. Dynamic markings include *sf*, *sf*, *sf*, *ff*, *p*, *cresc.*, *p*, *dim.*, and *pp*. The staff ends with a half note G2 and a fermata.

## Equale No. 2.

Poco Adagio

Musical staff for Equale No. 2, measures 1-12. The staff is in bass clef with a key signature of two sharps (D major). The music begins with a half rest, followed by a half note D2, a quarter note C#2, and a half note B1. A dynamic marking of *dolce* is placed below the first note. The staff continues with various notes and rests, ending with a half note D2.

13

Musical staff for Equale No. 2, measures 13-25. The staff continues with various notes and rests.

26

Musical staff for Equale No. 2, measures 26-48. The staff continues with various notes and rests. The staff ends with a half note D2 and a fermata.

## Equale No. 3.

Poco sostenuto

Musical staff for Equale No. 3, measures 1-8. The staff is in bass clef with a key signature of one flat (B-flat) and a 3/4 time signature. The music begins with a half note G2, a quarter note F2, and a half note E2. The staff continues with various notes and rests, ending with a half note G2.

9

Musical staff for Equale No. 3, measures 9-16. The staff continues with various notes and rests, ending with a half note G2.